

# Public Health in Moravian-Silesian Region

The 3rd V4 Conference on Public Health - Prague 2017

19. - 20.10.2017

MUDr. Helena Šebáková & team



Krajská hygienická stanice Moravskoslezského kraje se sídlem v Ostravě

Na Bělidle 7, 702 00 Ostrava, [podatelna@khssova.cz](mailto:podatelna@khssova.cz), [www.khssova.cz](http://www.khssova.cz)

# Content

- Characteristic of region
- RPHA Activity
- Structure of public health protection
- Cooperation
- Providing information

# Moravian-Silesian Region



**Olomouc  
Region**

**Zlín  
Region**

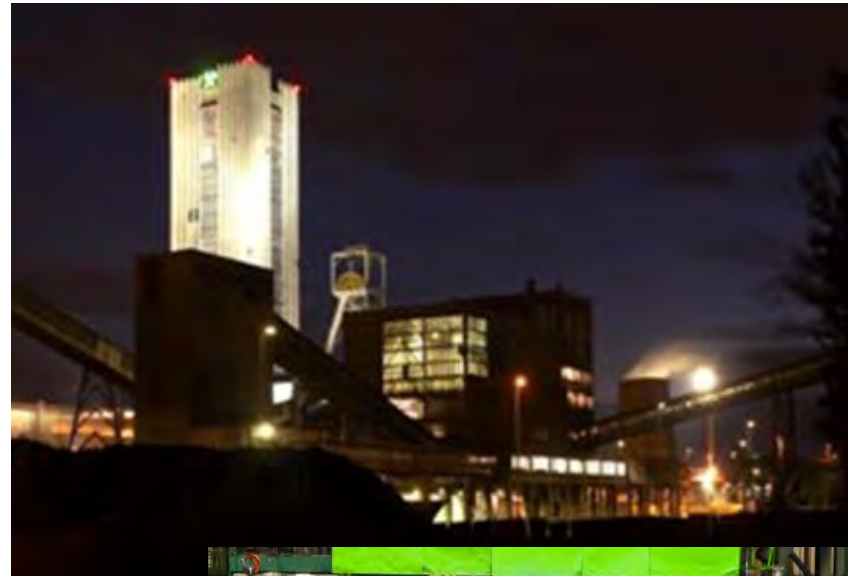
# Moravian-Silesian Region

- Area  
5 427 km<sup>2</sup>
- Population  
1 217 676
- Largest cities:  
Ostrava, Havířov,  
Karviná, Frýdek-  
Místek, Opava,  
Třinec



# Moravian-Silesian Region

- Heavy Industry - Coal mines, Coking Plants, Iron works (ArcelorMittal, ŽDB, Al Invest Břidličná, TŽ Třinec)
- Engineering (Vítkovice, Tatra Kopřivnice, Hyundai)
- Chemical industry (BorsodChem, Bochemie)
- Pharmacy (TEVA Opava)





# Moravian-Silesian Region

- Healthcare -  
4 643 medical  
doctors,  
18 hospitals,  
5 830 hospital beds
- Spa - Darkov,  
Klimkovice, Karlova  
Studánka,  
Rehabilitation  
Institute Hrabyně
- Public Health  
Institute

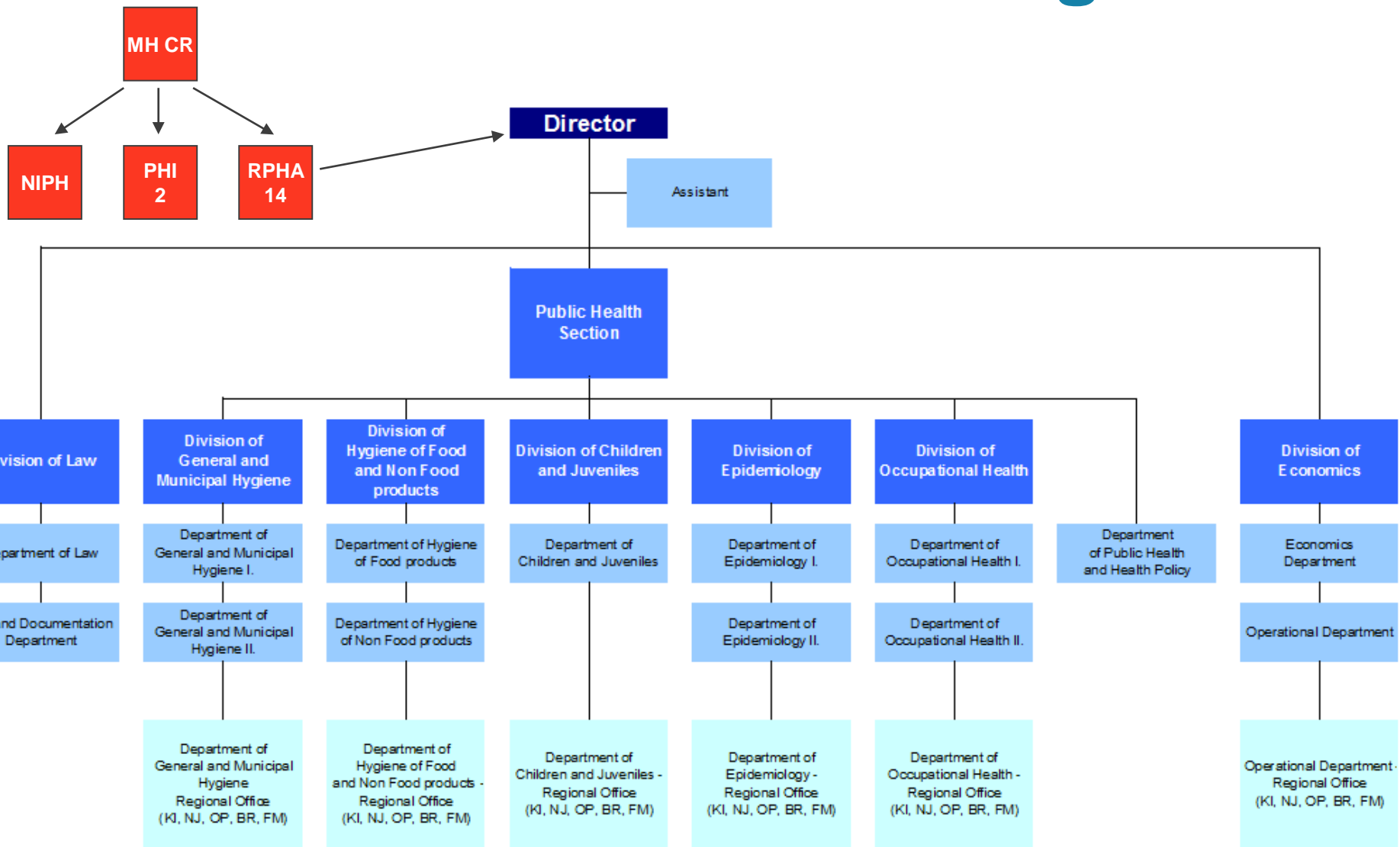


# Moravian-Silesian Region

- Education -  
Technical University  
of Ostrava,  
University of  
Ostrava (Faculty of  
Medicine), Silesian  
University Opava,  
Karviná



# Regional Public Health Authority of Moravian-Silesian Region





# Our mission

- LEGAL COMPLIANCE
- IMPARTIALITY
- TIMEKEEPING
- FORESEEABILITY
- CONVINCINGNESS
- ADEQUACY
- EFFICIENCY
- RESPONSIBILITY
- OPENNESS
- RESPONSIVENESS

# What we deal with

- State health supervision - inspection (Code on State supervision) Assessment of project documentations
- Noise protection, quality of drinking water, services
- Catering service, food safety, School meals
- Common use articles, dangerous products
- Assessment and management of health risks in the prevention of negative influence on the health status of the population
- Air protection activities
- Health promotion and regional health policy

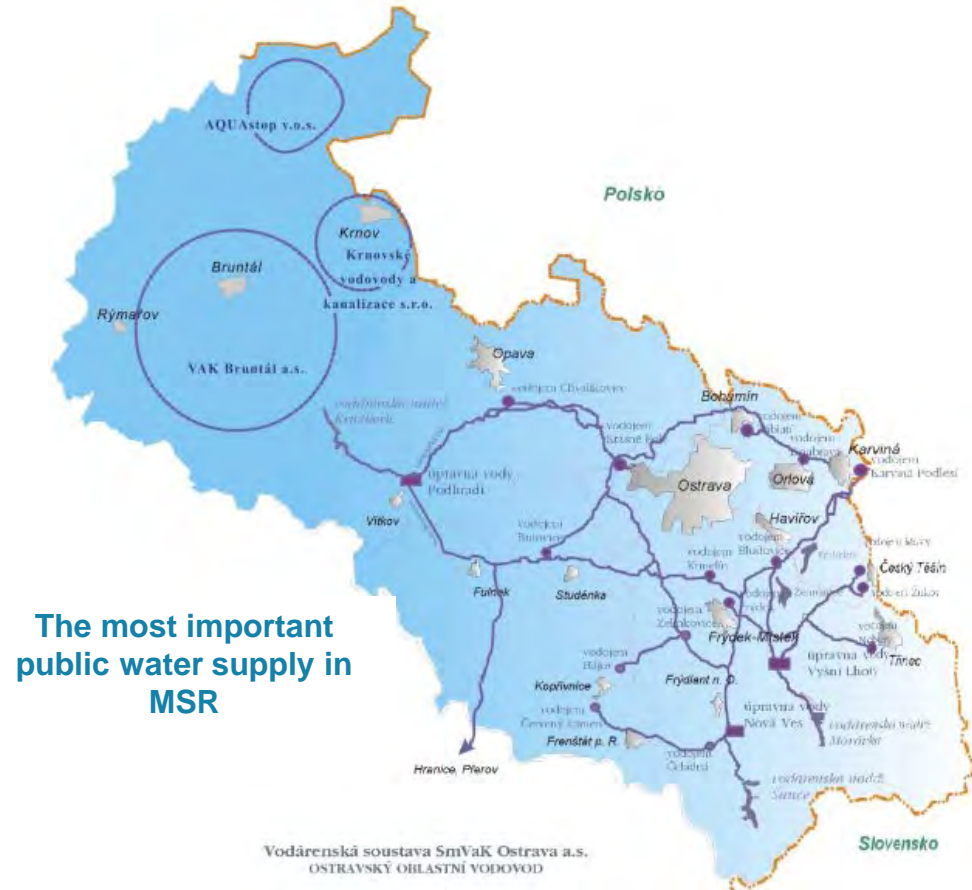
# Environmental noise protection

- Road, rail and air transport
- Stationary sources – industry, air conditioning, heat pumps



# Drinking water quality

- For the public supply of the population (public water supply, wells for the public)



Note: Artificial and natural swimming pools



# Supervision of services

- Services:
  - Hairdressing saloons
  - Pedicure, manicure
  - Solariums, cosmetic and massage services
  - Tattoo, piercing
  - Accommodations



# Catering services

- Inspections in:
  - Restaurants
  - Canteens
  - Institutional catering
  - Fast food
- cca 3000 catering services



# School catering

- Inspections aimed on safe food preparation
- Assessment of nutritional requirements



# Common Use Articles (CUA)

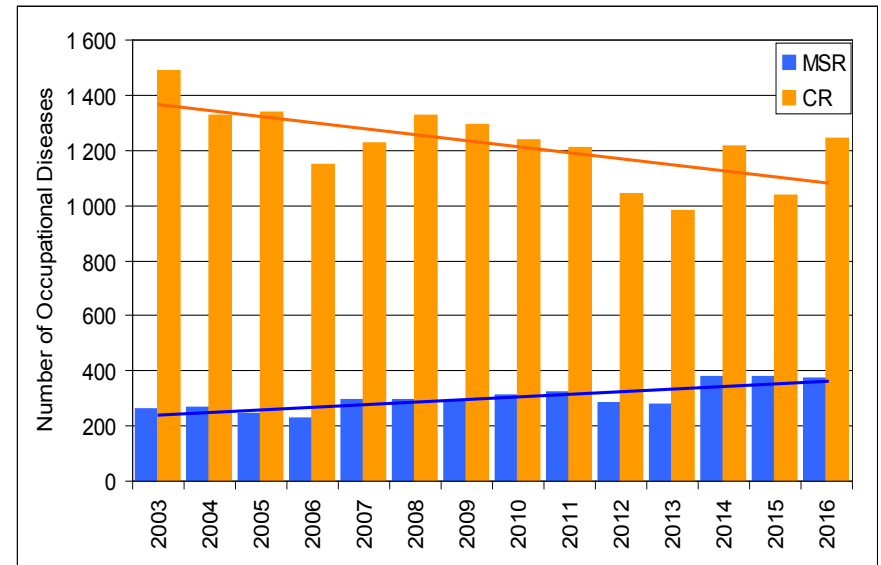
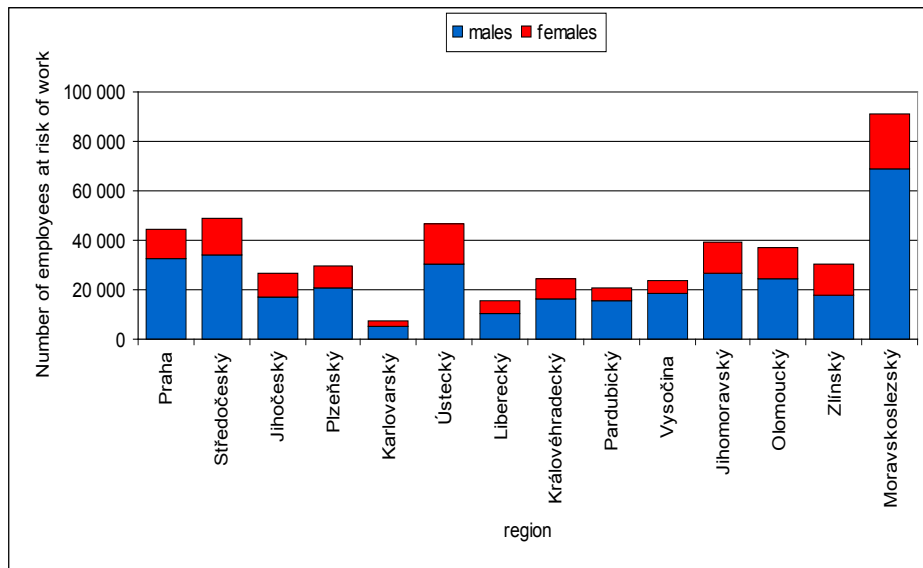
- Inspections of CUA producers, importers and distributors
  - Food contact materials
  - Cosmetic products
  - Products for children under 3 years
- Health problems investigation





# Occupational Health and safety

- Health Risks at Work - 91 034 (19 % CR)
- Occupational Diseases - 375 (30 % CR)



Health Risks at Work 2016

Occupational Diseases

Source: IS KaPr

[WWW.KHSOVA.CZ](http://WWW.KHSOVA.CZ)

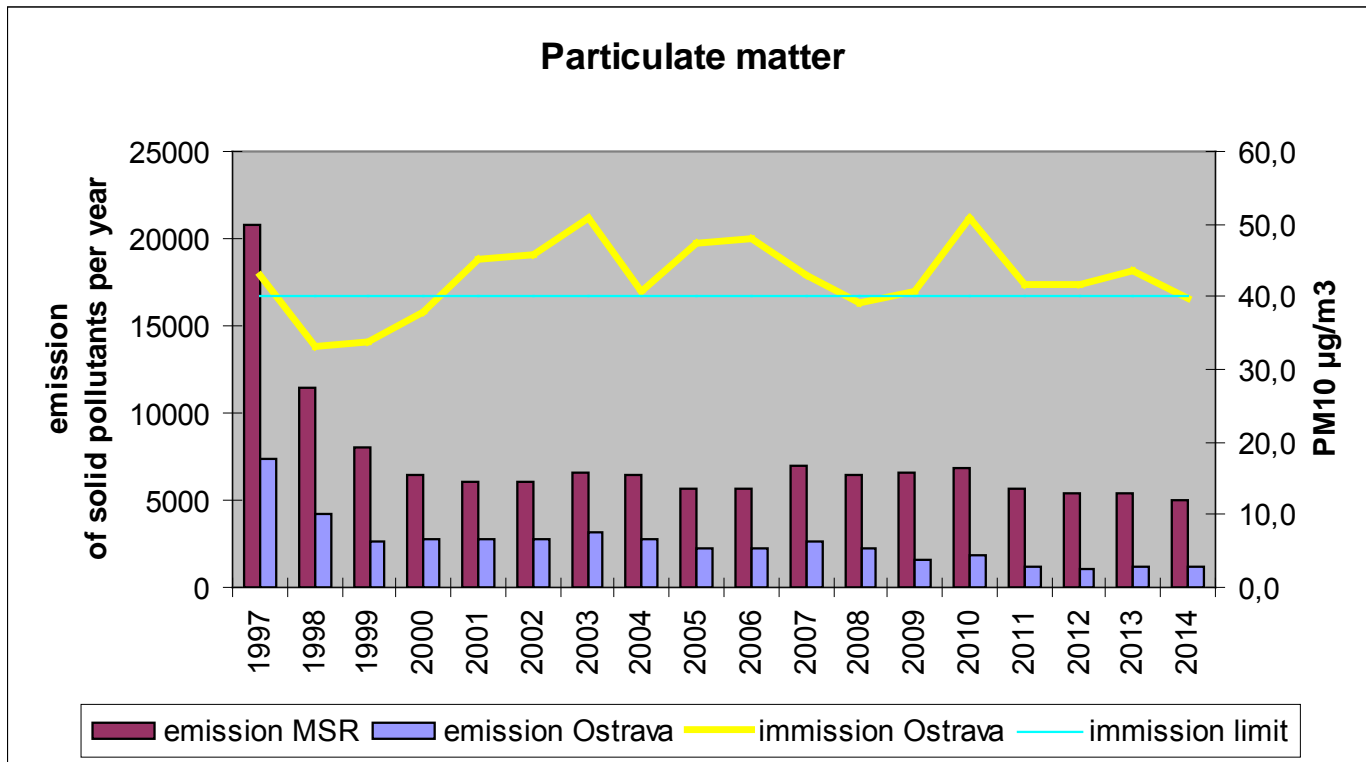
# Air pollution sources

- Industry
- Transport
- Local furnaces (individual housing)
- Particles from Poland
- Specific local sources
  - Old ecological burden (Ostramo lagoons)
  - Dumps, Burning tailings (heavy industry waste)

# Air monitoring

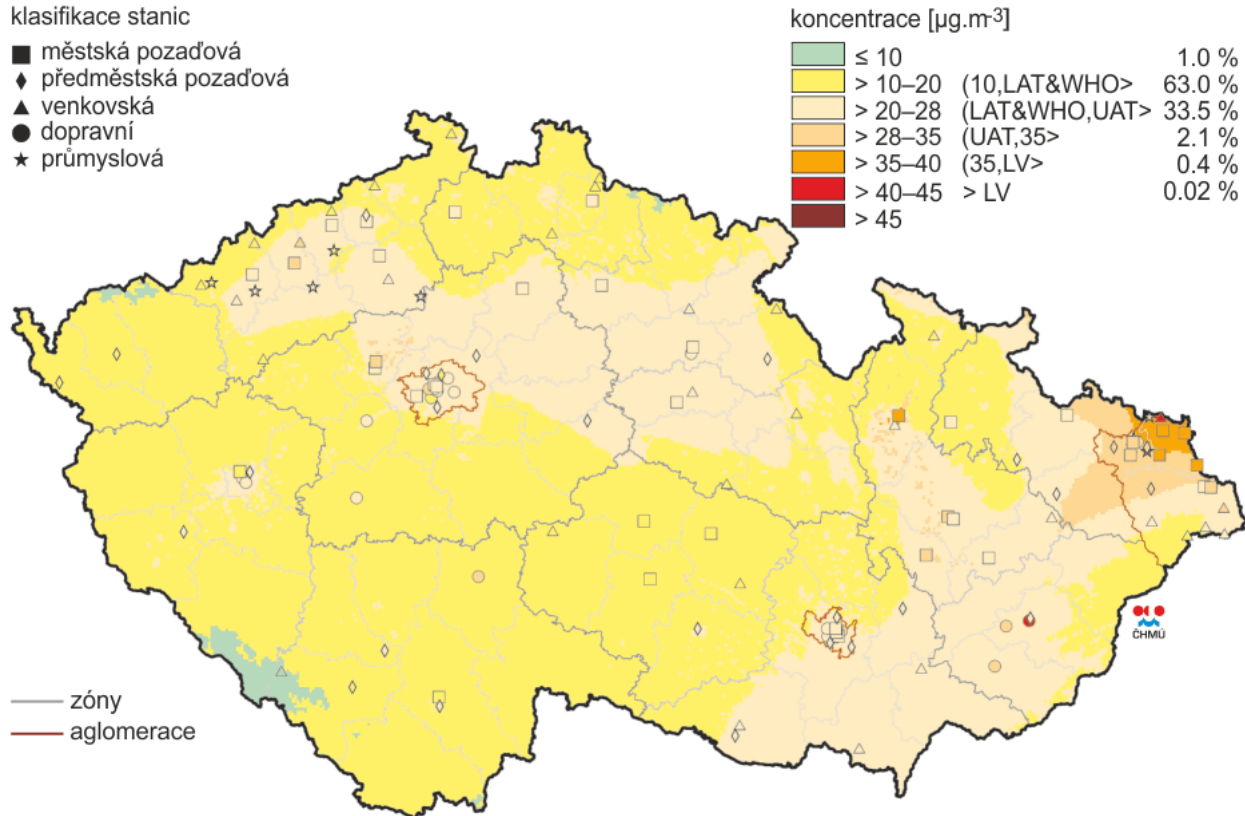
- Basic monitored pollutants:
  - dust particles (PM<sub>10</sub>, PM<sub>2,5</sub>, PM<sub>1</sub>), SO<sub>2</sub>, NO<sub>2</sub>, CO, O<sub>3</sub>
  - health-significant - metals (As, Pb, Cr, Cd, Ni), organic substances (benzene, PAHs/BaP)
- Monitoring networks - Czech Hydrometeorological Institute (CHMI), Public Health Institute (PHI)
  - daily limit PM<sub>10</sub> 50 µg/m<sup>3</sup>
  - annual limit PM<sub>10</sub> 40 µg/m<sup>3</sup>
  - **concentration recommended by WHO**  
**10-20 µg/m<sup>3</sup>**
  - annual limit BaP 1 ng/m<sup>3</sup>

# Solid pollutants emission



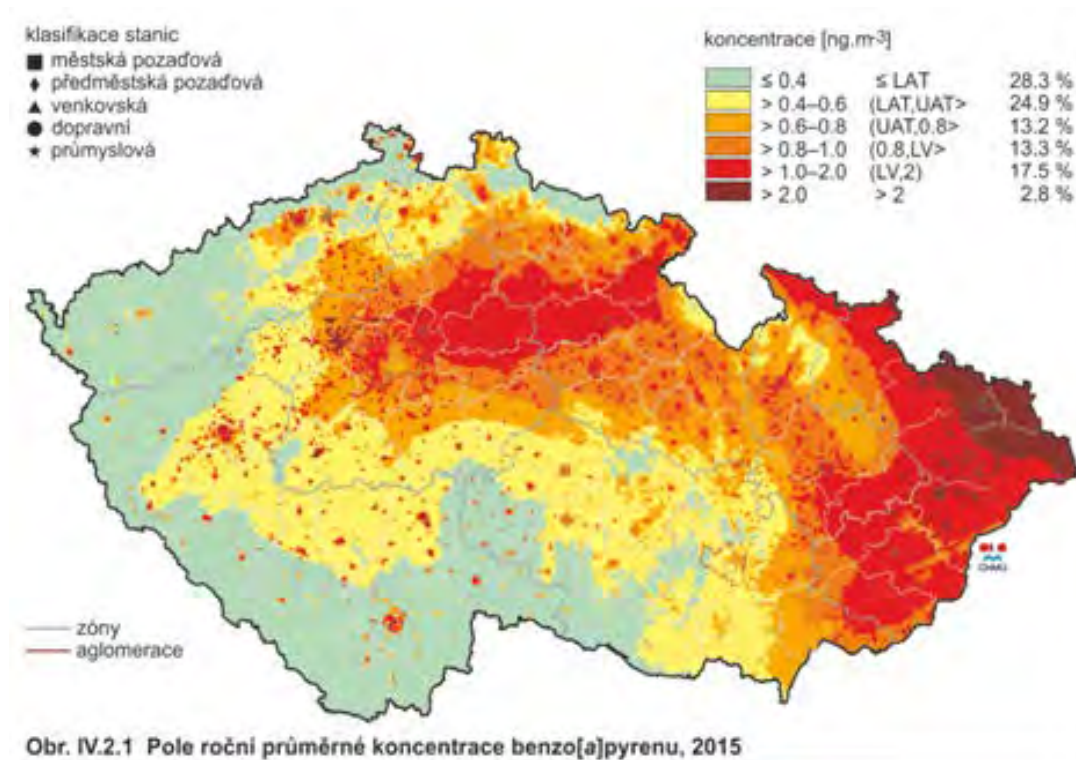


# Annual average concentration PM<sub>10</sub> 2015

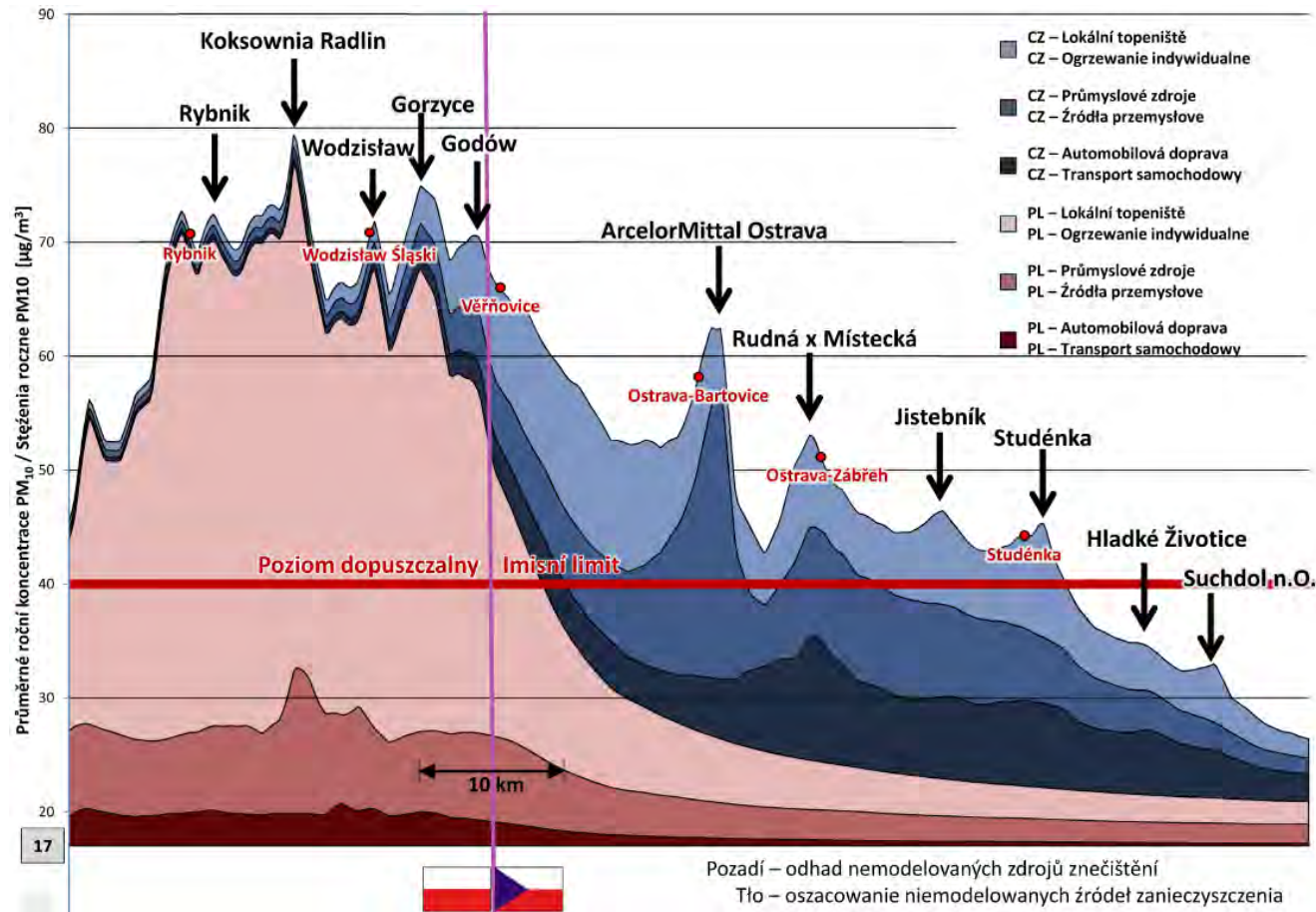


Obr. IV.1.2 Pole roční průměrné koncentrace PM<sub>10</sub>, 2015

# PAHs in the air



# Cross-border influence



Source: [www.air-silesia.eu](http://www.air-silesia.eu)

[WWW.KHSOVA.CZ](http://WWW.KHSOVA.CZ)

# Measures

- Parking lots outside the built-up area
- Transport terminals outside the city
- Reduction of average emissions
- Gas transport
- Disposal of environmental burdens
- Technology improvement
- Accepting authorising of action plans for air protection
- Boiler subsidies

# Epidemiology

- Infection disease surveillance
  - Information System of Children vaccination
  - Data collection in register and analysis
  - Transborder cooperation between Poland and Slovakia
  - Outbreak investigation and response
- Health care associated infections, State Health Inspection in health facilities
- AMR
- Endemic area of *Mycobacterium kansasii*



# Surveillance of communicable diseases



- Weekly surveillance of acute respiratory infections
- Surveillance of:
  - FWBD
  - STI
  - HIV/AIDS
  - TB
  - Vectors diseases
  - Influenza and other infections

# Vaccination register

(Information system of children immunization)



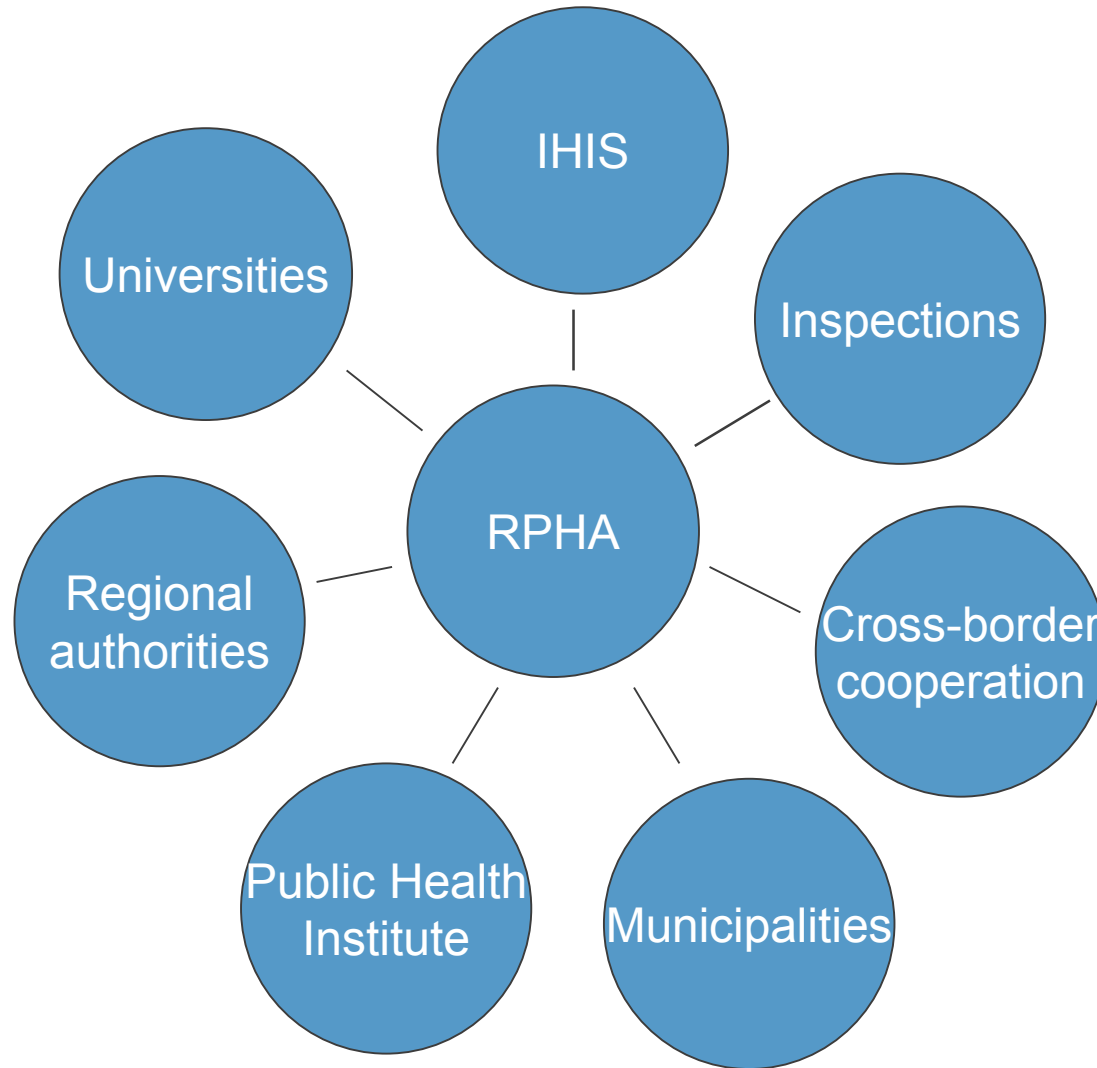
- Invitation letters for parents for compulsory vaccination
- Childhood and adult vaccination coverage surveys

# Hygiene in healthcare facilities



- Checking and approving of operational rules in healthcare facilities
- Healthcare-associated Infections (HAI)

# Cooperation



# Current RPHA Activities

- Strategic Environmental Assessment (SEA) - programs for emission reducing, air quality improvement, cross-border cooperation with Poland and Slovakia
- Environmental Impact Assessment (EIA) - steelworks modernization, ecologization of the heating plant, Ostramo lagoons rehabilitation, Regional integrated waste center/incinerator
- Integrated Pollution Prevention and Control (IPPC) - possibility of supervision from the point of view of the public health protection during the service
- Assessing the projects of old ecological burden rehabilitation



# Current RPHA Activities

- National monitoring „Health status monitoring in relation to the environment“ (NIPH, PHI)
- Project Health 2020
- Integrated Rescue System, Regional Security Council, crisis management - participation in committees
- High risk infectious diseases
- Educational Department for the Faculty of Medicine, University of Ostrava
- Conferences, seminars, publications, information in the media, annual report, newsletter

# Public information

- Annual report
- Newsletter
- Website  
<http://www.khsova.cz>
- Facebook
- Public health & environment conferences, seminars
- Press & TV news

**Ročenka**  
**2015**



Krajská hygienická stanice Moravskoslezského kraje se sídlem v Ostravě

Facebook



[www.khsova.cz](http://www.khsova.cz)



## ZDRAVOTNÍ UKAZATELE OBYVATEL MORAVSKOSLEZSKÉHO KRAJE



SRPEN 2016

**ZPRAVODAJ**  
**2016**

Krajské hygienické stanice  
Moravskoslezského kraje  
se sídlem v Ostravě





# Greetings from Ostrava



**Thank you  
for your attention.**